
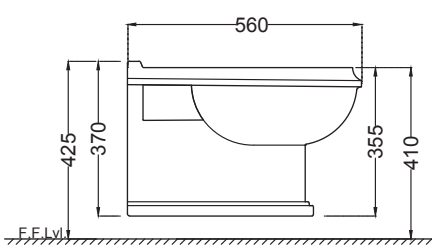
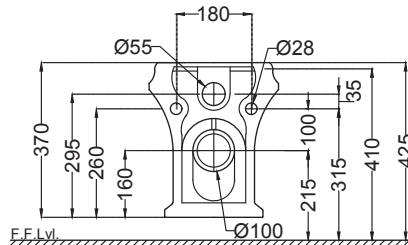




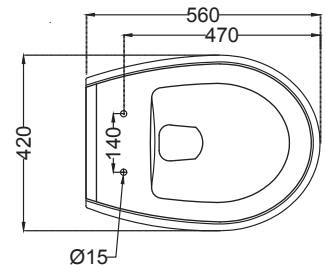
PRODUCT DETAILS	
Item Code:	QPS-WHT-7953UFPM
Type:	Wall Hung WC
Flush valves	Regular, Dual & I Flush advantages
Outlet	Horizontal
Material	Ceramic - Vitreous China
Colour:	White
Technical Details:	Internal diameter of inlet hole dia. $\varnothing 55 \pm 3$ mm
	External diameter of outlet hole dia. $\varnothing 100 \pm 5$ mm
Product Dimension	355x555x370 mm
Product Weight	23 kg
FEATURES	
Victorian Design, Coordinated Collection, Rimless Bowl Design, Efficient Flushing, Anti Germ Glazed	
ACCESSORIES INCLUDED	
UF Soft Close Seat cover	QPS-WHT-7101UF
Inlet outlet Gasket	ZPS-WHT-GK01
ACCESSORIES EXCLUDED	
Rack bolt	ZPS-SNS-RB01
Concealed Cistern	JCS-WHT-2400S,2400FS,2400WS
CERTIFICATION	
Compliance : IS 2556.2:2004, IS 2556.1:1994 , EN 997 :2012+A1/CE	
All technical dimensions are in accordance to British standards, Bureau of Indian Standards	
	
TECHNICAL DRAWING	



SIDE VIEW



BACK VIEW



TOP VIEW

DISCLAIMER: Our every effort has been made to ensure factual accuracy, the information presented subject to changes due to requirements in different sites, markets and/ or countries. All dimensions are in mm (Tolerance ± 5 MM). Jaquar reserves the right to make the necessary amendments at any time without prior notice.

ALL DIMENSIONS ARE IN MM.
(TOLERANCE ± 5 MM)